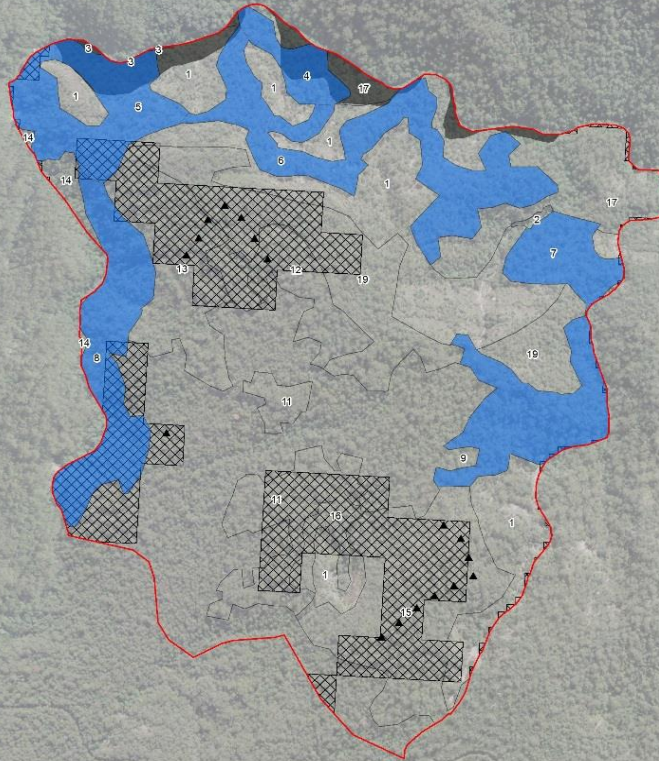


Commission notes:

- There was a significant difference between the location of originally mapped old growth forest and the currently mapped location.
- 6 hectares of new old growth forest was identified (44 hectares in total).
- Only 14 percent of identified old growth is protected under the special management zone.



Legend	
▲	Kippara18_Wpts_30Jan18
■	Old Growth
■	Rainforest
■	NoOGRF
■	Rainforest CRAFTI and RN17
■	HCVOG

Old Growth & Rainforest Remapping Kippara State Forest Cpt 18

Copyright NSW Office of Environment and Heritage (OEH).
This map is not guaranteed to be free from error or omission.
OEH and its employees disclaim liability for any act done on the information in this map and any consequences of such acts or omissions.

